

**anthos**

**C9**



EN

**Anthos  
Classe C9**

CONTINENTAL  
INTERNATIONAL  
HYBRID  
CART

**en  
sure**

# en sure

## **ensure technology.**

Special systems, technologically advanced tools, latest generation applications - all managed by an intuitive interface packed full with functions and resources. Voice commands, NFC connectivity, availability of dedicated devices and integrated functions for endodontics and implantology.

## **ensure workflow.**

New suspended chair ergonomics integrating chair Sliding motion guarantees operating comfort throughout the day's treatment sessions. Intuitive functions and dentist-to-dental unit interactions based on new technologies reduce chair time - boosting productivity.

## **ensure performance.**

Integrated, multimedia and hygiene systems allow dentists to achieve high-level performance. Controlled from the control panel, cutting-edge instruments such as the micromotor with UV LED technology for composite detection and a wide range of specialist features boost the professional confidence of practitioners.



**Anthos  
Classe C9.**

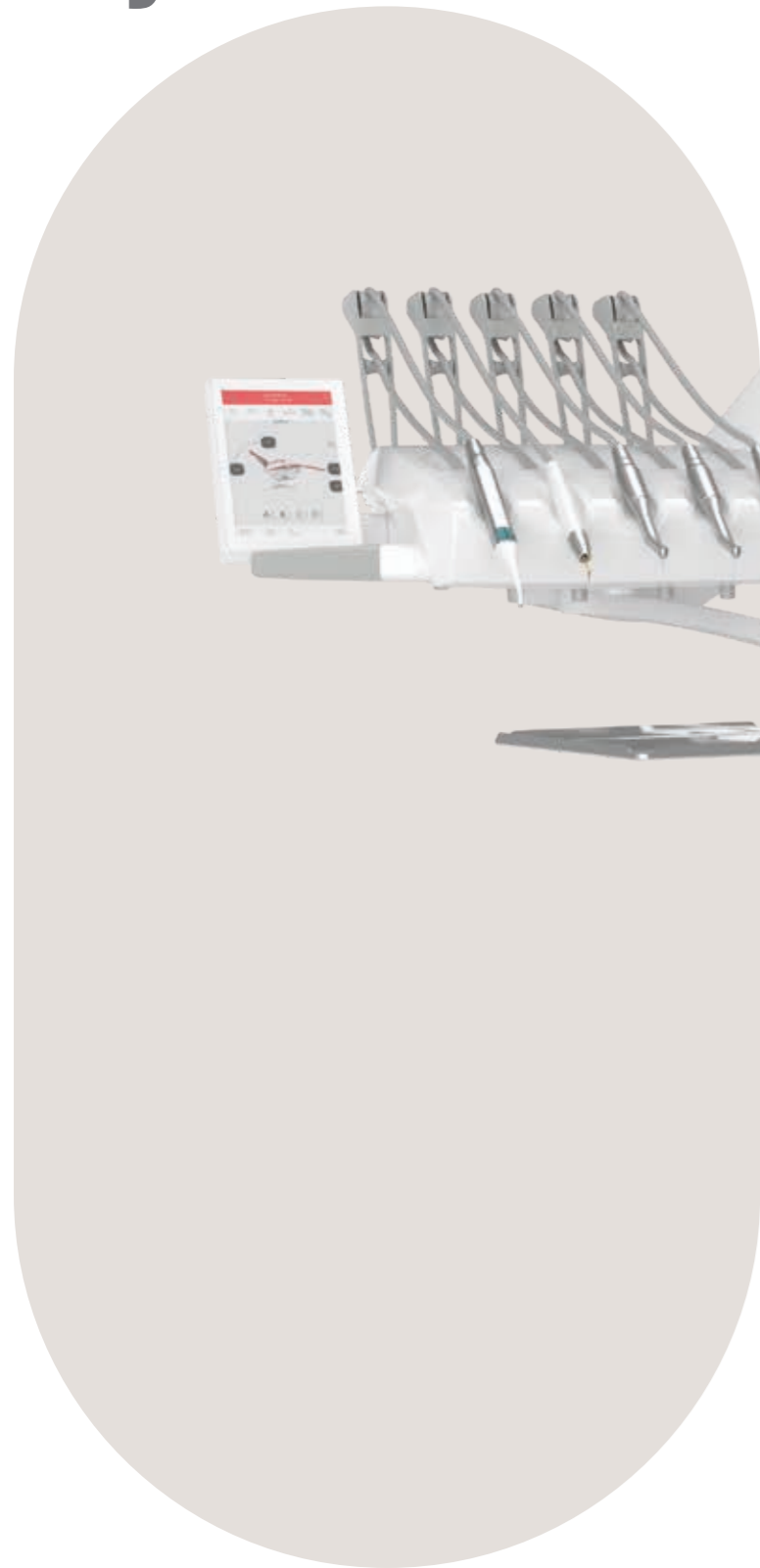
Anthos  
**Classe C9**  
Continental



Anthos  
**Classe C9**  
International



Anthos  
**Classe C9**  
Hybrid



Anthos  
**Classe C9**  
Cart



# Simple, straightforward workflow

During each treatment, the dentist can rely on an advanced interface with a 7" touch display. It intuitively manages integrated systems, chair movements and instruments, sets parameters and customises them for each clinical discipline:

implantology, endodontics and conservative dentistry. It monitors treatment data in real time and can display images and videos directly on the screen - protected by resistant and disinfectable glass.

## FULL TOUCH MULTIMEDIA

### Intuitive interaction.

Intuitive on-screen graphics speed up work. With simple smartphone-like gestures, the dentist can interact with the dental unit and the integrated devices, relying on intuitive graphics. Available as an option on Continental, the LEFT SIDE PACK configuration allows use of the instrument control panel to the left of the dentist's module.



### NFC connectivity.

Thanks to NFC connectivity, the dental unit can recognise a dentist and activate the specific settings saved during that doctor's registration. This happens instantly when a medical professional holds a special bracelet they are wearing close to the chip on the side of the dentist's module - indicated by the NFC symbol. Practical, lightweight and easy to sanitise, the NFC bracelet supplied is made of IP68 class silicone. Useful in multi-user practices, the system has 20 memory slots (i.e. for up to 20 dentists). Users can save personalised settings for the patient chair, for integrated instruments, interface preferences and automatism for operating light, cuspidor bowl and cup.



### Interactive LED Pack.

This optional application provides LED indications on the status of different functions integrated into the dental unit. Multiple, intuitive alerts are used to communicate useful information to the dentist based on the colour of the alert. Alert notices may refer e.g. to the scaler operation mode, or the progress of hygiene cycles in the dental unit. During root canal treatment with the apex locator on, the LED ring changes from green to yellow to red according to the distance from the apex (this mirrors the on-panel bar colours).

### Voice controls.

Available as an option, the voice assistant feature optimises the workflow, minimises physical contact with accessory systems and streamlines any tasks performed without an assistant. The system recognises micromotor/scaler mode voice commands; voice control also lets users switch on/off and adjust the operating light and activate programmed patient chair movements. It can also start the timer when performing clinical procedures such as impression-taking.



### USB.

The USB port allows the individual personalised settings of each dentist to be saved. These settings and the captured images can be downloaded.



### Multimedia control panel.

Camera-captured images and X-rays acquired via the integrated system can be displayed in HD.



### Images and video footage.

Video clips showing how to use and maintain a dental unit with a Full Touch Multimedia control panel are available.

# Superior clinical performance

Seamless integration between brushless micromotor, peristaltic pump and surgical handpiece create an implantology system piloted by the powerful microprocessor of the 7" multitouch control panel. Speed, torque and pump flow rate parameters

can be selected and saved at any time. A simple, user-friendly interface lets users manage every single work stage quickly and precisely. This set-up eliminates the bulk associated with on-cart stand-alone systems.

## IMPLANTOLOGY



### i-MMs micromotor.

This powerful, autoclavable micromotor delivers a torque of up to 70 Ncm and, together with the EVO R20L contra-angle, provides a perfect response to the implantologist's every need. The software allows precise, safe control of speed and torque.



### EVO R20L Contra-angle.

Designed for implant surgery. Can be removed, autoclaved and heat-disinfected. Features internal cooling and external spray. LED lighting is powered by an integrated generator.



### Peristaltic pump.

Controlled by the Full Touch control panel, the peristaltic pump is incorporated on the dentist's module, thus eliminating the bulk of modules, carts and rheostats.



### Torque curves.

This function allows constant monitoring of the torque delivered by the micromotor and provides a complete report on each stage of treatment. Exportable via USB stick: the .csv format is used for academic assessment, the PDF provides a document to be filed with medical records and the .png file is perfect for fast viewing on the Multimedia display. The clinical information highlighted by this function provides sound support for any subsequent treatment on adjacent or contralateral teeth. The implant tightening torque is also recorded and can be included in the surgery documentation.

# Endodontic therapies

Endodontic specialisation relies on a complete work system combining a dedicated micromotor equipped with Autostop, Autoreverse and Autoforward functions, a database of endodontic files and an optional apex locator. All of these can be precision-

controlled via the Full Touch panel. Essential data is displayed during treatment, ensuring complete control. The software automatically sets torque and speed; alternatively, dentists can set values according to personal requirements.

## ENDODONTICS



### Contra-angle.

With a 4:1 reduction ratio, EVO E4 can be autoclaved and heat-disinfected. A miniaturised head aids access to difficult-to-reach treatment zones.

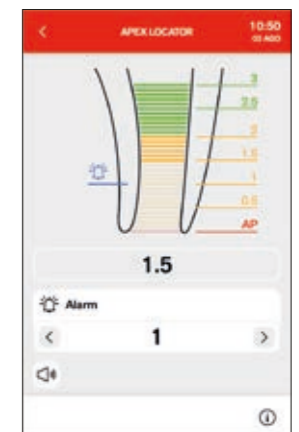
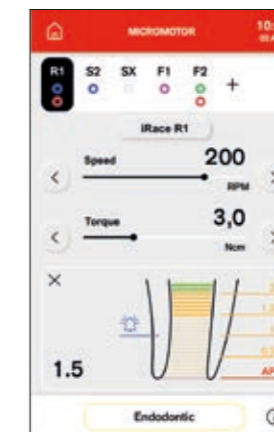


### i-MMs micromotor.

Light, compact and fully autoclavable. Fine, precise torque adjustment.

### Apex locator.

The apex distance is displayed on the Full Touch display during root canal instrumentation. The nearing of the apex is verified by the ENDO software. Once the apex is reached the Apex-Stop function interrupts micromotor rotation.



### Reciprocating mode.

A combination of reciprocating mode (i.e. alternating rotation movement) and the EVO E4 contra-angle allows use of RECIPROC®, RECIPROC BLUE® and WAVEONE GOLD® endocanal burs. The endodontic bur brand names are not owned by Cefla or any of its subsidiaries.



# More space, better comfort

Anthos has created Classe C9, a new model in its range featuring suspended chair ergonomics. Its clean, functional design lines allow footprint to be minimised thanks to the small size of the unit body. This gives the medical team ample space to work comfortably around the base of the dental unit.

## Suspended-chair ergonomics.

Wider work spaces and an improved approach to the patient by the work team are enabled by this ergonomic design. The resulting layout of the practice is also more functional.

## Backrests.

A choice of three backrest types - narrow, wide and Nordic - meets all the dentist's ergonomic needs. As always, the backrest guarantees patient comfort and easy access.



## SUSPENDED CHAIR ERGONOMICS



## Sliding movement.

With the Sliding function the dentist no longer has to reposition the light and instruments during treatment, thus maintaining the work zone set-up. The movements of the backrest and seat are synchronised. During work, this increases the operating space in the 12 o'clock zone.

## Soft Motion.

With Soft Motion technology, start and stop movements are gradual, smooth and virtually without vibration or noise. From the patient's viewpoint, this is particularly relaxing.

## Slow Mode.

Available as an option with Soft Motion, this mode lets dentists make extremely fine patient chair movement adjustments. These almost imperceptible adjustments are extremely useful during implantology work or while using the microscope.



NARROW BACKREST



NORDIC BACKREST



WIDE BACKREST



## Patient presence sensor.

An optional sensor detects the patient presence and can be connected to useful automated functions. When no patient is detected, the stand-by state is activated, reducing power absorption for greater sustainability. Where the Di.V.A. is employed, the sensor gathers and processes statistical data on dental unit use.

## Headrest.

Designed based on the patient's anatomy, the Comfort headrest with its orbital movement allows for perfect head positioning, ensuring patient comfort even during longer treatment sessions.



# Express your style

## PERSONALISED STYLING

Customisation has always been a priority in all Anthos models. The dentist can define a configuration, choosing preferred instruments, applications, integrated systems, control panels and accessories. Each medical professional is therefore free to tailor-make their ideal dental unit for their own dental practice. To complete these models' high

configurability potential, the patient chair can be customised by choosing standard upholstery or Memory Foam padding. The chair upholstery is available in 19 different colours to enhance any working environment with the owner's style and personality.



**A touch of class.**  
The new aesthetic finishes available for the unit body enhance the model lines and add a distinctive and at the same time modern and precious touch to your dental practice.



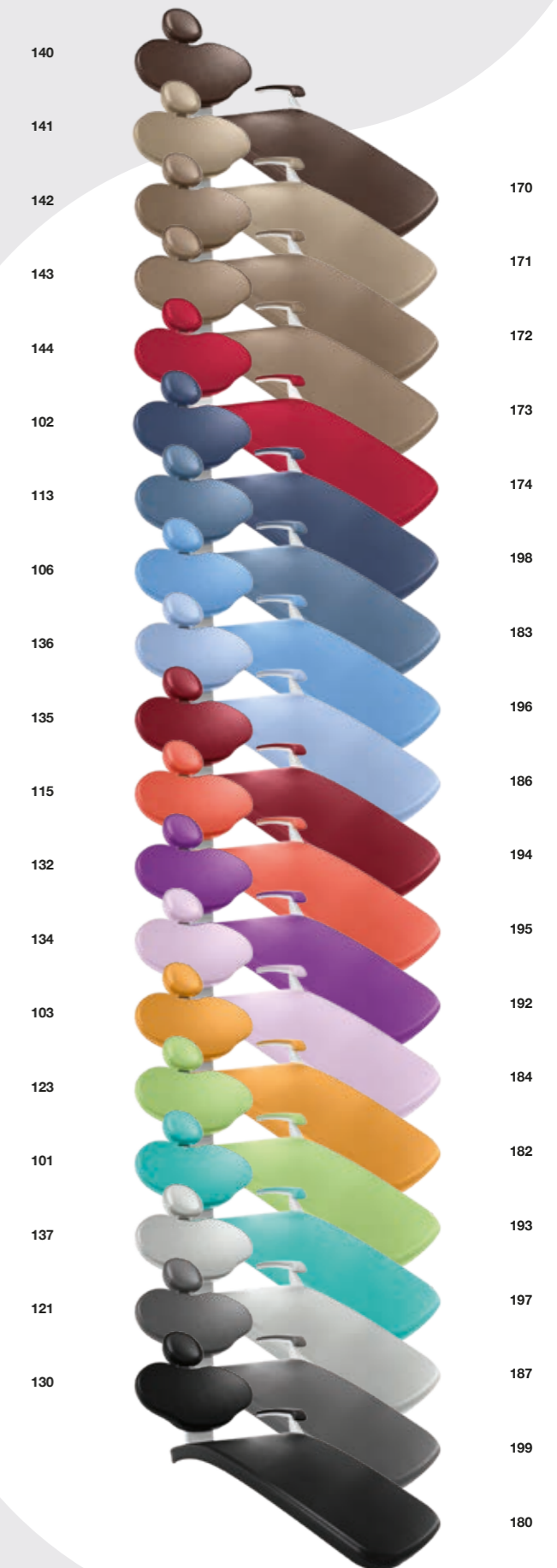
### COLOURS

140	Brazilian Brown	170
141	Papyrus Beige	171
142	Anatolian Hazelnut	172
143	Arabian Gold	173
144	Ruby Red	174
102	Atlantic Blue	198
113	Pacific Blue	183
106	Mediterranean Blue	196
136	Indian Blue	186
135	Venetian Red	194
115	Scottish Salmon	195
132	Blueberry Violet	192
134	Japanese Wisteria	184
103	Nevada Yellow	182
123	Polynesian Green	193
101	Caribbean Green	197
137	Satin Silver	187
121	Anthracite Grey	199
130	Graphite Black	180



### Standard upholstery

### Memory Foam padding



# Ergonomic versatility

The Continental module, lightweight and compact, makes the dentist's work easier. The instrument levers do not interfere with the light thanks to their reduced shorter vertical footprint and ensure increased instrument outreach. Each lever has individually adjustable traction force and balance.

Equipped with the option of SideFlex technology, the instrument levers ergonomically follow sideways tubing movement. The coupling reduces on-wrist traction and fatigue while optimising instrument recovery from every working position.

**LIGHTWEIGHT, SMOOTH DESIGN**

## Outstanding ergonomics.

Whatever the treatment zone, positioning is easy and ergonomic thanks to the broad excursion of the new, more compact module arm system and its pneumatic vertical release mechanism. For example, the transthoracic operating position can be reached with ease.



# Working geometries

RATIONAL DESIGN

The International module handpieces can be gripped with ease from any working position. The instrument layout is the result of a meticulous analysis of dentists' needs. Optimal control panel visibility, instrument

accessibility and working space layout are the pillars of perfect ergonomics. A large transthoracic tray-holder module is also available, a useful aid during surgery sessions.



## Assistant's module.



Module with 3 or 5 holders, mounted on a double arm and height-adjustable.



The 2 cannulae can be combined with up to 3 selected handpieces, including camera, syringe, T-LED light or a dynamic instrument. Wide mobility to optimise work ergonomics.



The glass-protected touch screen controls all basic functions. A positionable stainless steel tray holder completes the accessory range.

## Cuspidor bowl with optical sensor.

The water-to-cup delivery system has an automatic filling sensor. A powered cuspidor bowl ensures synchronisation of rinse procedures and patient chair movements.



# The power of light

Anthos makes advanced technologies available to dentists offering significant practical benefits for medical professionals. Today, brushless micromotors are available with FIT (Fluorescence-aided Identification Technique) technology. Activating the UV LED lights

incorporated in the micromotor highlights those parts of the tooth treated with composite materials. In the case of old composite that needs to be reworked, this visual aid helps dentists shorten treatment times and operate more precisely and safely.

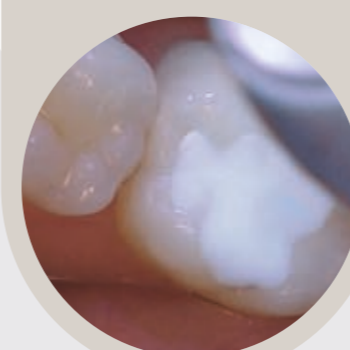
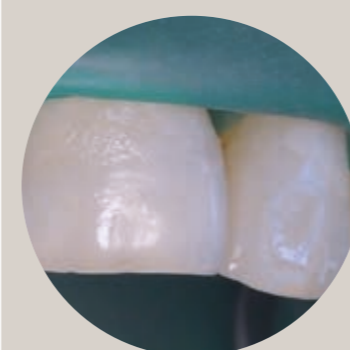
FLUO MICROMOTOR

T LED



### Easily visible.

The composite material in the tooth is revealed by the UV LED light. This makes its removal easier, faster and more precise compared to illumination with traditional white LED light.



The new curing light can effectively activate all composite materials, latest-generation ones included. An expanded emissions spectrum greatly enhances the effectiveness of the instrument, which

features programmes for every need. With a comfortable, slimline handle and a pivot that allows 180° rotation, users will always be able to introduce the instrument into the patient's oral cavity with ease.



### User-friendly programming.

With a fully autoclavable light guide, T-LED also features a modern user-friendly control interface. Seven curing programmes are available. These include the new bracket program which consists of 5 brief, rapid-succession emissions.



### For orthodontists.

Following the completion of fixed brace treatment, bracket removal is simpler and more effective if the composite material is clearly highlighted by the fluorescence-activating LED light emitted by the micromotor.



### Aesthetic treatments.

Being able to detect the composite material that secures the invisible attachments using UV LED light is extremely useful during removal procedures. Dentists can thus proceed more safely, confident that no composite traces will be left on the tooth.

# Limitless clinical performance

INSTRUMENTS

POTENTIAL

Classe C9 comes with latest generation instruments for endodontics, implantology and conservative dentistry, including brushless micromotors with latest generation FIT technology, useful for identifying composite materials present in the teeth. All instruments in all modes of operation are intuitively managed by the 7" Full Touch control panel supplied

with C9. The control panel provides the real-time data needed to perform any treatment perfectly. Turbine, micromotor, scaler, curing light and intraoral camera settings can be adjusted for specific dentistry specialisations. An intraoral camera or curing light can be added as the sixth instrument, also on the International module.

In addition to their outstanding clinical performance, instruments fully integrated with dental unit electronics help users make the most of their potential. The operating

parameters are customisable: Classe C9, supplied with dedicated instruments, is a powerful tool available to medical professionals.



## Micromotors.

Two versions: i-MMr (3.3 Ncm) with LED; i-MMs (5.3 Ncm) with LED lighting, ready for endodontic and implantology applications. From 100 to 40,000 rpm.



## Scalers.

With or without LEDs, handpieces compatible with the best tips on the market. Highly useful in ENDO mode as root canal treatment instruments.



## Turbines and contra-angles.

Dentists can use a broad range of turbines and contra angles for specific dentistry tasks.

## Syringes.

Ergonomically-shaped 3- and 6-way syringes are available. The metal syringe body and the tip (both straight and angled versions are available) can be removed and autoclaved.



## HD camera.

The C-U2 model has glass optics and a LED light diffuser. It incorporates an HD 16:9 sensor that captures high definition clinical images.



# Optimal lighting

Proper lighting of the working field is an essential requirement. Perfect lighting of the oral cavity is the result of design choices aimed at providing top-performance professional lighting fixtures. Both operating lights available for Classe C9 have a

LED emission source. They feature a 3-axis joint, a hermetically sealed front panel, a "no touch" sensor to adjust light intensity and a dual reflector to ensure a broadly spotlight and shadow-free work zone.



## Venus LED MCT (Multi Colour Temperature).

The Venus LED MCT, supplied as standard on Classe C9, allows the use of 3 different colour temperatures to ensure perfect lighting of the oral cavity in every circumstance. 4,300K warm light for surgical treatment, 5,000K neutral light for conservative dentistry and 5,500K cool light for colour capture. Light intensity up to 50,000 Lux can be modulated via the "no touch" sensor. The Curing Mode function prevents composite pre-polymerisation, simultaneously ensuring optimal lighting.



## OPERATING LIGHT

### Venus LED MCT View.

Venus LED MCT can be equipped with an integrated camera. It allows 4K videos and photos to be captured to a resolution of 13 MP, useful for sharing clinical cases and as teaching materials. Camera parameters and controls are easily managed by the supplied software; with image capture, recording

start, zoom and Smart Focus. If a Full Touch control panel is present, management from a dedicated graphic menu is also possible. Voice commands, if available, can also be used for the main light control functions.



### Communication.

In a treatment plan promotion perspective, the use of the camera facilitates communication with the patient. During the diagnostic process, any conditions can be clearly highlighted on the monitor, making it easy and immediate to identify a problem and discuss it with specialists.

### Documentation.

In the event of a dispute, the footage generated by the integrated camera will provide important professional evidence and solid documentation. The camera is a valuable tool that captures footage of clinical cases. The saved footage can be important evidence of the correct execution of the protocols and can be used to document the work performed in a dental practice.

### Liquid lens technology.

Thanks to this technology, focusing - performed digitally with the Smart Focus function - is simple, fast and precise. It can be controlled directly from the PC, via a button on the Full Touch control panel, or by touching the sensitive area on the light.

# Refining diagnoses

## DIAGNOSTIC INSTRUMENTS

Classe L9 can be integrated with the diagnostic tools used in digital workflows. The components of the multimedia system are the X-ray unit, the digital sensor and the HD camera on the dentist's or the assistant's module. The captured images can be duplicated in Full Touch 7" Multimedia, which allows images to be enlarged to study all details. When C9 is

connected to the practice network, images from a PC can also be viewed. Immediate and clear sharing of information strengthens the dentist-patient relationship. This facilitates accurate evaluation of the patient's state of health and treatment possibilities.



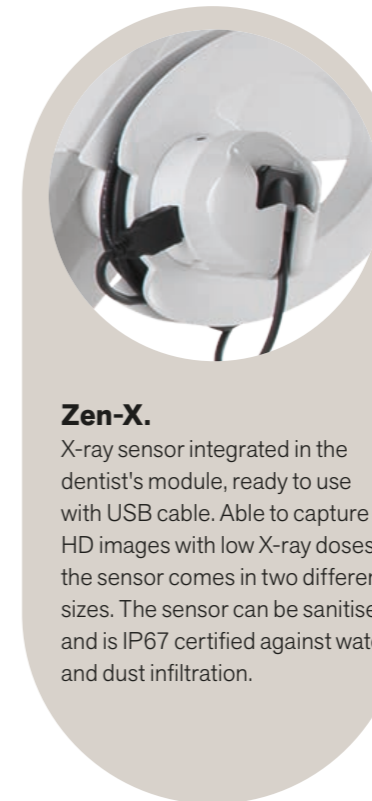
### **RXDC - HyperSphere technology.**

Intra-oral X-ray system integrated with the dental unit via a handheld wireless device. Outstanding images thanks to the parallelism that stems from 30 cm collimation and a focal spot of 0.4 mm. Rotating around the spherical coupling, the tube head can reach any position.



### **22" LED Monitor.**

Full HD 16:9 monitor with excellent brightness and contrast levels thanks to the LED light sources. Viewable from every angle, also available in a multitouch version and installable with 2 different types of support.



### **Zen-X.**

X-ray sensor integrated in the dentist's module, ready to use with USB cable. Able to capture HD images with low X-ray doses, the sensor comes in two different sizes. The sensor can be sanitised and is IP67 certified against water and dust infiltration.



### **C-U2 HD camera.**

High-resolution images aid dentist-patient communication. Easy to use (no manual adjustment required), slim design means distal zones can be reached with ease.

### **Control panel.**

The "pinch to zoom" feature on the Full Touch Multimedia control panel with smartphone technology allows users to enlarge or reduce HD images acquired with a camera or digital X-ray sensor or saved from a USB port or PC.



# Clinical safety

## HYGIENE

A broad selection of integrated hygiene systems ensures workplace safety. Safety for patients, personnel and the dentist. In addition to automatic devices that prevent contamination of internal

ducting, the design features effectively minimise the risk of cross-contamination. The colour control panel gives the user full control over sanitisation cycle progress.

### Essential design.

Instruments fit into special holders incorporated in the unit body. Meticulous design eliminates the need for accessories and significantly speeds up the initial procedures. Moreover, the volume of the tank reduces filling frequency and, as filling is conveniently done from above, there is no need to access the unit body interior.



### W.H.E.

Certified DVGW continuous disinfection system that prevents backflow contamination of the dental unit water supply and acts against all water-borne contaminants. The use of Peroxy Ag+ is recommended.



### BIOSTER and FLUSHING.

The automatic BIOSTER system performs intensive disinfection of instrument spray internal circuits with an antiseptic liquid (Peroxy Ag+). FLUSHING eliminates any stagnant liquid from the ducts with a quick rinsing action.



### A.C.V.S.

Automatic system for the flushing and disinfection of the suction system. Allows sanitisation to be performed between one patient and the next.



### S.H.S.

Device that feeds water to the sprays as an independent alternative to mains water. Works via a reservoir filled with distilled water. Extremely useful where mains water is hard.

# Constant defence



## EFFECTIVENESS



**Double filters.**  
These easily removable filters make emptying and cleaning tasks simple.



**Removable instrument levers.**  
The SideFlex instrument levers can be removed to aid cleaning. Optional on L6.



**Handle.**  
The Continental module handle is removable and disinfectable.



**Handpiece support.**  
Autoclavable silicone instrument support mat



**Removable support.**  
On the Continental module, the instrument support can be removed and disinfected.



**Operating light.**  
The handles are removable and autoclavable.



**Unit body access.**  
Wide opening on the side of the unit body for easy access to integrated systems.



**O.D.R.**  
As-standard mechanism that automatically emits an air jet to clean any residual liquids or solids from the handpiece after use.

# The value of choice

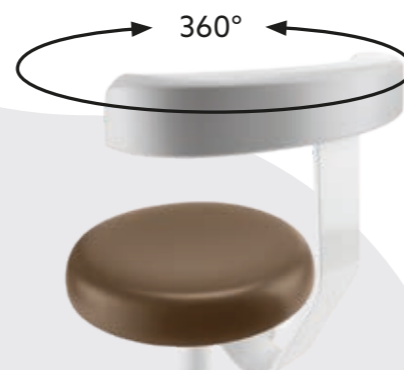
A broad range of accessories lets dentists personalise the operating unit according to their specific needs.



## Seats.

A range packed with ergonomic solutions. S7 for the dentist, height adjustable and with the option of adapting the backrest angle. S8 for the assistant, with a circular seat to facilitate frequent position adjustments as required during treatment.

S9 is the latest-generation saddle-shaped active seat with tilt mechanism. Evens out weight distribution and corrects posture to minimise strain on the spine. Each model contributes to maintaining energy levels and a feeling of well-being throughout the day.



## Foot control.

Three different ergonomic designs are available (cabled or wireless versions). These allow activation of Chip Air/Water, patient chair movement and recall of saved positions.

## Stop Vacuum.

Handy foot control provided on the patient chair base: when pressed it stops suction without the user having to replace the cannulae in the holders.



# Personalised choice, versatile layout

## MULTI-CONNECTOR

### Multi-connector system.

Choosing the best practice layout is easier than ever. With the multi-connector system, replacing an old dental unit with a new Anthos model is work-free

as the appropriate installation kit can be selected to match the existing power outlets at the time of order.



### Installation kit.



**P** – connections are located under the rear of the unit body (standard arrangement)

**S/S short** – the connections are located under the chair seat  
**K** – connections are located under the front of the unit body



# Anthos Connect

## REMOTE ASSISTANCE

All products in the Anthos dental unit range are equipped with an integrated device that allows internet connection. This means the practice can rely on a real-time remote diagnosis and technical support service.

Moreover, Di.V.A. (Digital Virtual Assistant) lets dentists track their use of the dental unit, of the instrumentation and of the completed disinfection

cycles, all on a simple dashboard.

Just open any browser to access the digital virtual assistance services website. Constantly updated, these services are available on the cloud, are specific to the purchased model and do not require any software downloads.



### Disinfection cycles.

The Di.V.A. tracks frequency of hygiene system use. It logs each system start to build up a record of performed disinfection cycles. Useful for in-practice inspections, it also estimates consumption and monitors effective reactivation of equipment.



### Tutorials and user manuals.

Thanks to Di.V.A., users can access tutorials specific to the purchased model (e.g. a video showing how to disassemble the cuspidor bowl or fill the tanks used for disinfection). Users also have direct access to the constantly-updated online use and maintenance manual.



### Patient sensor.

The patient sensor gathers and processes statistical data on dental unit use; the information is transmitted to the Di.V.A. and displayed on the dashboard.

### Using the instruments.

The dashboard lets users monitor how the integrated instrumentation is actually used, with info on individual instrument work modes (Conservative, Endo, Implant) included. This helps estimate maintenance requirements or assess the need for upgrades on some machines.

### General use.

It's possible to monitor usage of a single dental unit or the complete installed machine pool. This means a dental practice owner or a dental practice chain can track how their dental units are being used, as quantified by the optional sensor that detects patient presence or operating light activation.





[anthos.com](http://anthos.com)



**BU MEDICAL EQUIPMENT  
SEDE LEGALE ED AMMINISTRATIVA  
HEADQUARTERS Cefla s.c.**

Via Selice Provinciale, 23/a  
40026 Imola - Bo (Italy)  
tel. +39 0542 653111  
fax +39 0542 653344

**STABILIMENTO  
PLANT**

Via Bicocca, 14/c  
40026 Imola - Bo (Italy)  
tel. +39 0542 653441  
fax +39 0542 653601



05/2026 ATC9GB1241S00  
Due to our policy of constant technological upgrading, technical specifications may be subject to change without prior notice.  
According to the standards in force, in extra-EU areas the availability and specifications of some products and/or characteristics may vary. Please contact your local distributor for further information.